



Columbiana Station

150 Harbison Blvd, Columbia, SC

COLUMBIANA STATION SITE PLAN



NO.	RETAILERS	SF
10	Firehouse Subs	1,600
20	Tropical Smoothie Cafe	1,600
30	Crumbl Cookies	1,600
40	Publix	51,420
50	Massage Envy	2,975
60	Brazilian Wax by Andreia	1,225
70	Super Nails	1,050
90	Carter's	3,850
100	Rack Room Shoes	12,002
110	West Marine	9,200
120	Old Navy	15,000
130	TJ Maxx	30,000
135	Sierra Trading Post (Coming Soon)	40,800
140	Burlington (Coming Soon)	40,800
150	Target	124,000

COLUMBIANA STATION

CENTER PHOTOS

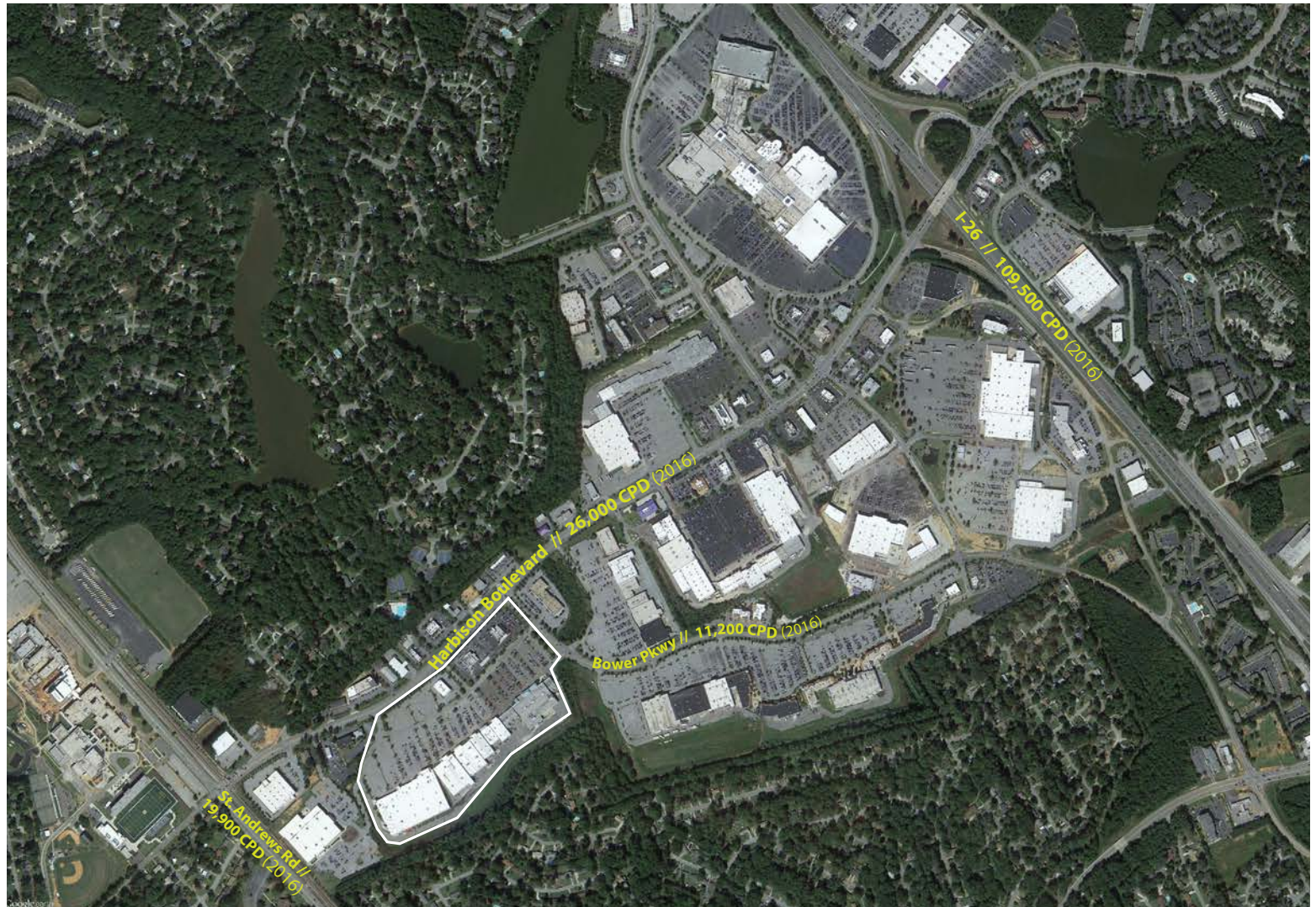
CENTER HIGHLIGHTS

The dominant retail center in Columbia's primary shopping district

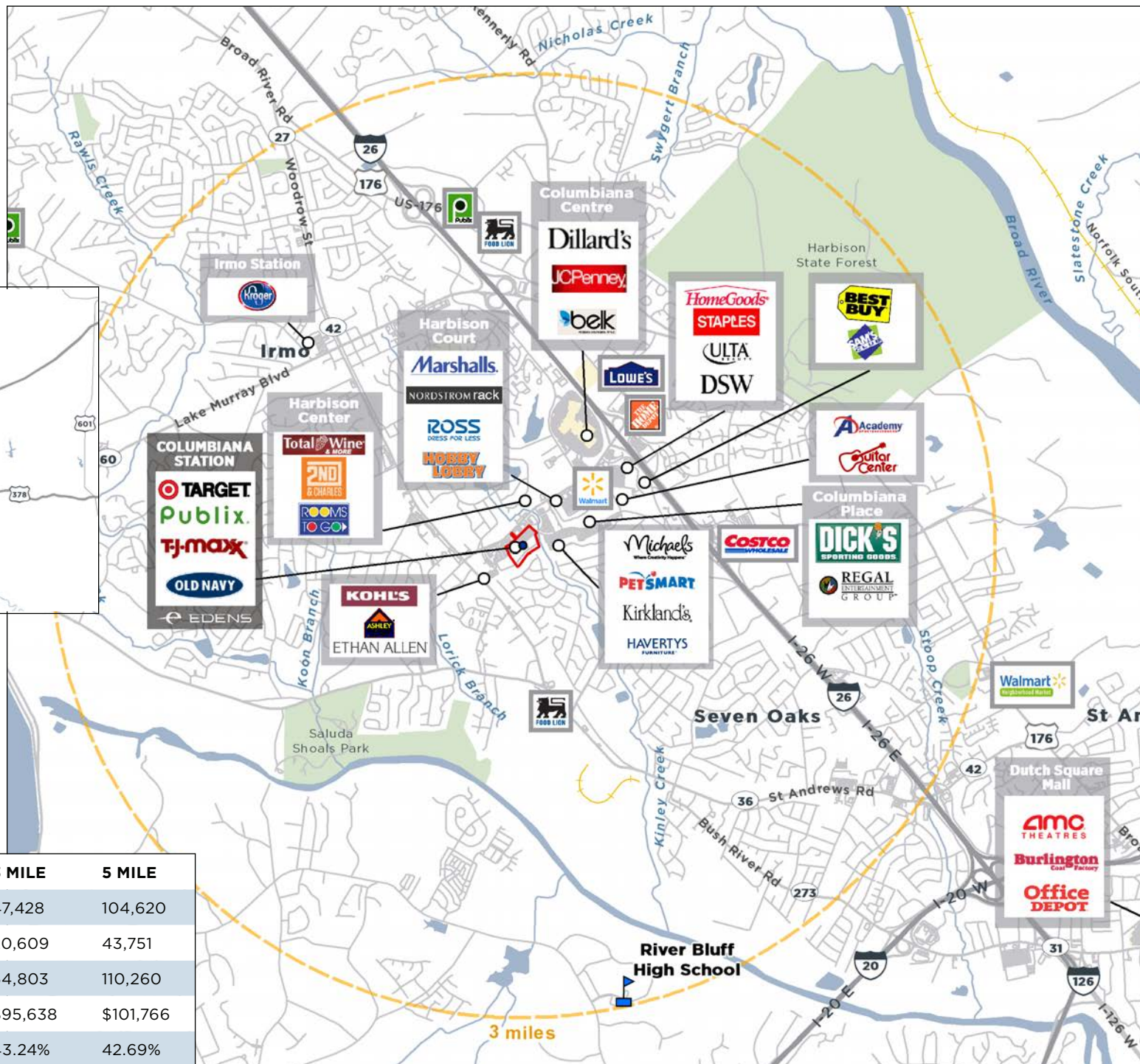
Anchored by major retailers:
Target, Publix, TJ Maxx, Old Navy

Excellent visibility along Harbison Boulevard, the most dominant retail corridor in Columbia, SC, where **26,000+** cars pass daily

The center has a regional draw and is in close proximity to two interstate highways: I-26 & I-20



COLUMBIANA STATION TRADE AREA



DEMOGRAPHICS	1 MILE	3 MILE	5 MILE
Population	6,143	47,428	104,620
Households	2,721	20,609	43,751
Daytime Pop.	12,655	54,803	110,260
Avg. HH Income	\$93,941	\$95,638	\$101,766
Education Attn.	45.97%	43.24%	42.69%