

moultrie
PLAZA
—

STEVEN SHELL
LIVING

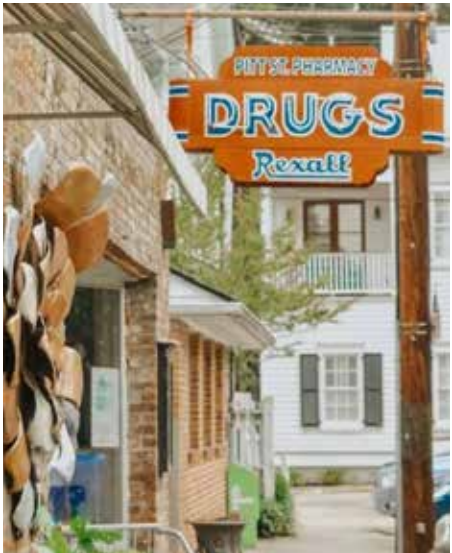
Charleston, SC



Trade Area



The Neighborhood



Demographics

AFFLUENT
Average household income within a 3-mile radius is **\$174,458**.

EDUCATED
Educational attainment, measured by adults with a bachelor's degree or greater, within a 3-mile radius is **88.12%**

POPULATION
Total population within a 5-mile radius is **107,030**.

DAYTIME POPULATION
Daytime population within a 5-mile radius is **171,114**.

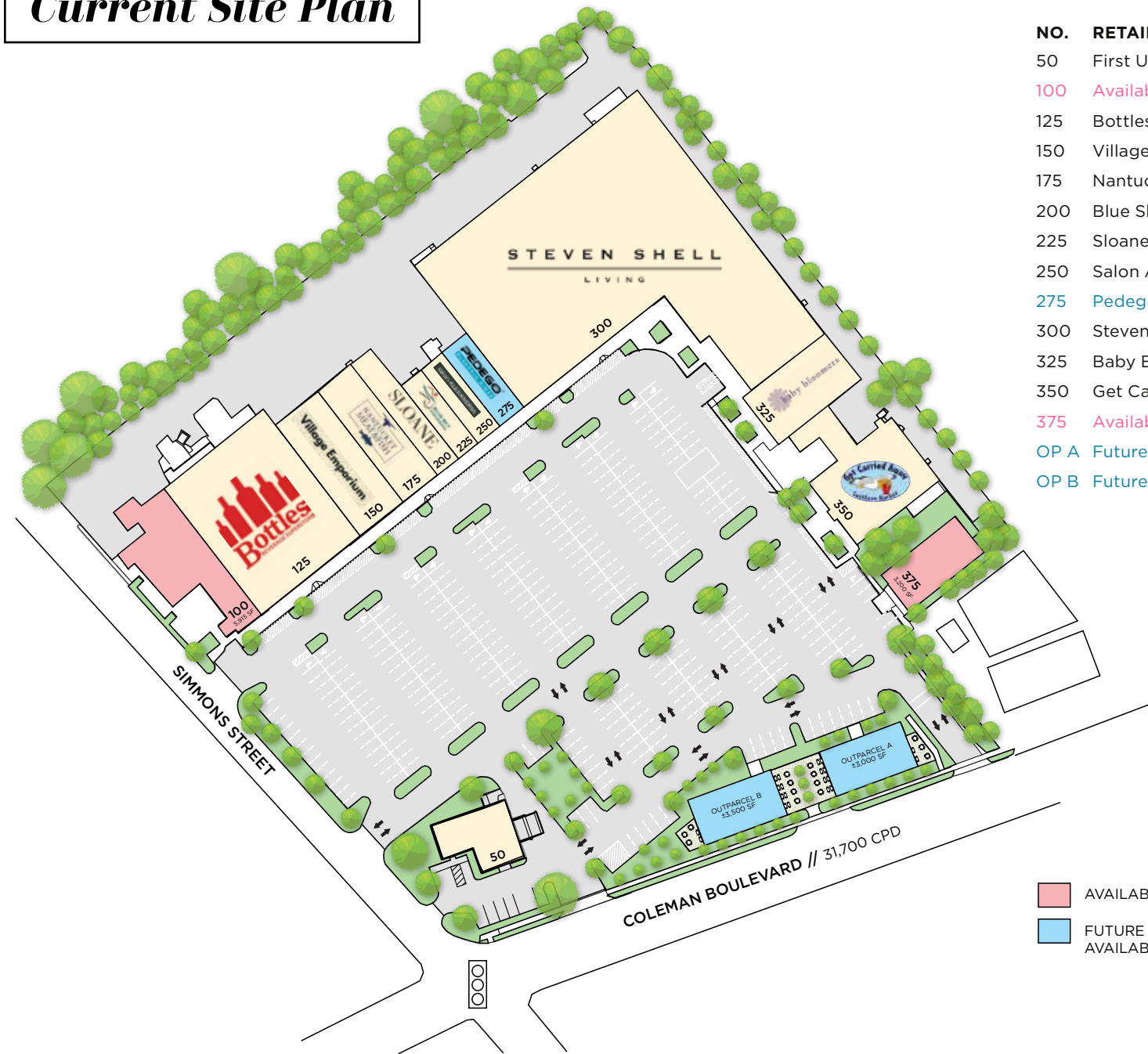
AREA FACTS

GROWING TRADE AREA: Mt. Pleasant is the **fourth largest** municipality and largest town in South Carolina, and one of the state's fastest-growing areas, doubling in population between 1990 and 2020.

ACCESS: Mount Pleasant to Charleston is 9.3 miles via HWY 17, with a drive time of 15 mins in normal traffic

TOURISM: In 2024, the Greater Charleston area had **8 million** visitors, spending over **\$14 billion**.

Current Site Plan



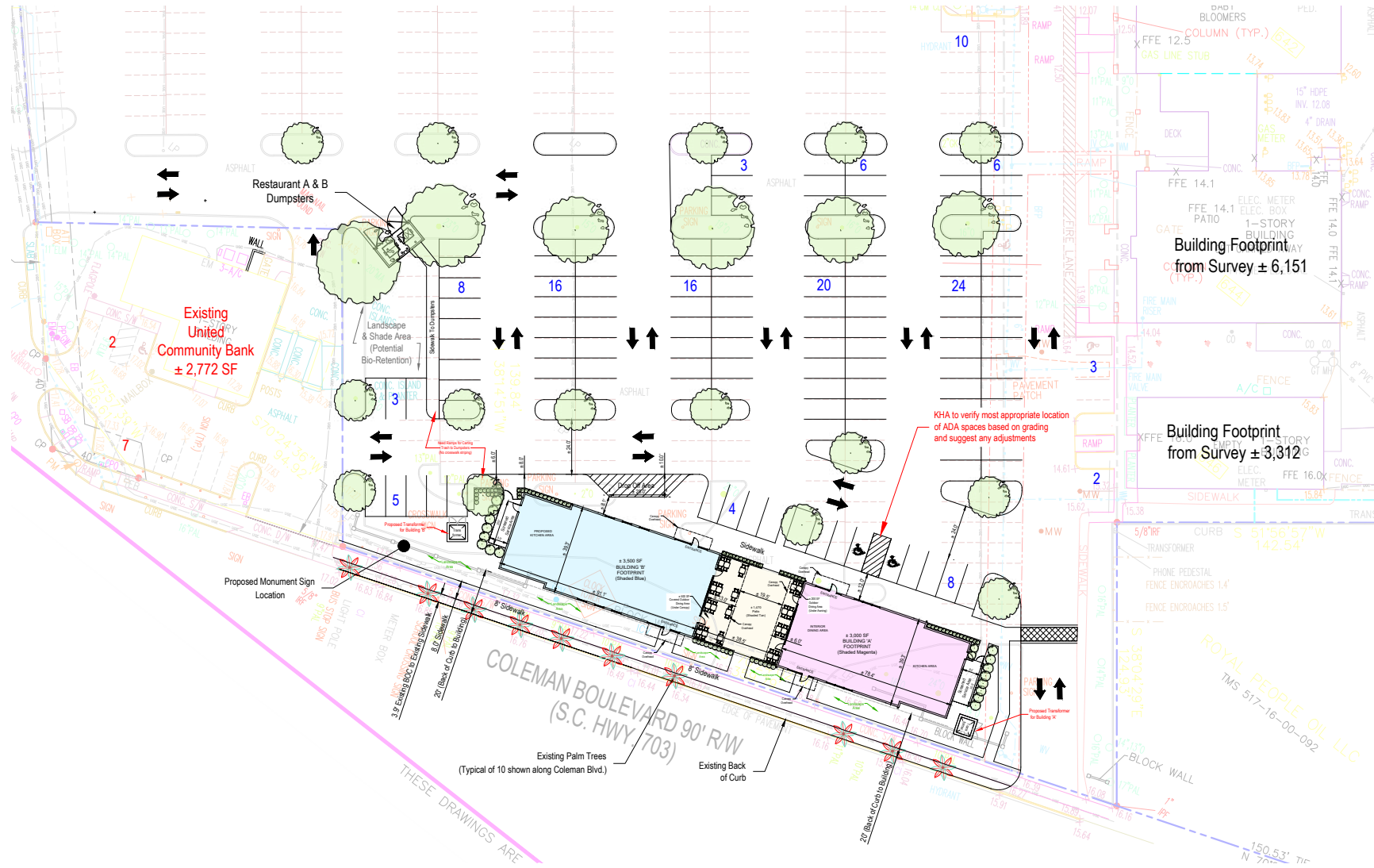
NO.	RETAILERS	SF
50	First United Bank	2,898
100	Available	5,915
125	Bottles	15,070
150	Village Emporium	4,200
175	Nantucket Meat & Fish Market	7,200
200	Blue Sky Endurance	1,600
225	Sloane Boutique	2,000
250	Salon Alexandria	1,765
275	Pedego Bikes	1,600
300	Steven Shell	46,630
325	Baby Bloomers	4,500
350	Get Carried Away	7,065
375	Available	3,200
OP A	Future Available	3,000
OP B	Future Available	3,500

AVAILABLE
FUTURE AVAILABLE

Center Images



Outparcel Opportunities



Outparcel Elevations

OUTPARCEL BUILDING A



OUTPARCEL BUILDING B



Retailer Spotlight



Steven Shell Living is a distinctive home furnishings and design destination established in 2013. Known for its expansive 50,000 square foot show-room, the store offers a mix of unique indoor and outdoor furniture, lighting, rugs, art, and accessories sourced from around the world and made to fit a wide range of styles and spaces.



Bottles is a locally owned wine, beer and spirits destination that’s beloved by locals and visitors alike. Bottles is committed to supporting local breweries and distilleries, with dedicated shelves and regular tastings that help you discover new favorites.



Nantucket Meat & Fish Market is a family owned and operated specialty food market that brings an upscale shopping experience to coastal South Carolina. Known for its fresh seafood, prime cuts of meat, sushi, prepared foods, and curated grocery selection, it’s a go-to destination for quality ingredients whether you’re planning a dinner party or stocking up on everyday essentials.



Sloane Boutique is a charming local women’s clothing boutique known for its curated collection of stylish dresses, tops, sweaters, jewelry and accessories. The shop offers both trendy and timeless pieces perfect for everyday wear or special occasions



Salon Alexandria is a well-established luxury hair salon, known for its expert stylists and personalized approach to hair care. Since opening in 2006, the salon has built a reputation for delivering gorgeous results.



Village Emporium is a local home decor destination known for its eclectic mix of vintage finds, antiques, furniture, and artwork. It’s a favorite spot for design lovers and collectors seeking one-of-a-kind items to elevate their space.



Get Carried Away is a lively Southern-style market and café offering fresh, grab-and-go meals and prepared Southern favorites, alongside a selection of wine, craft beer, groceries, and gifts. The market features The Perch, an indoor/outdoor patio and bar where guests can linger for lunch, drinks, and casual social time.

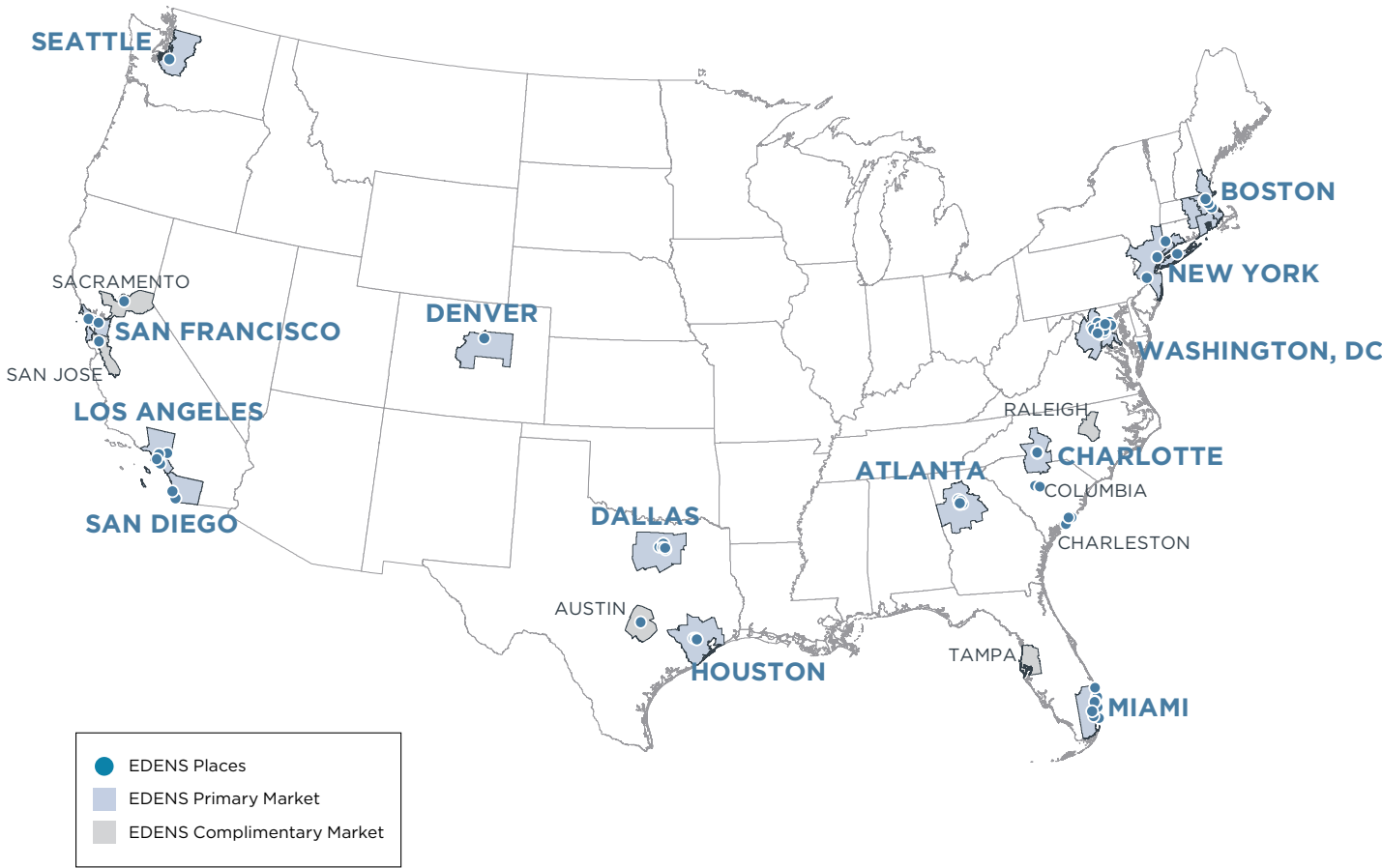


Blue Sky Endurance is a local sports shop offering high-performance gear, apparel, bikes, shoes and accessories designed to help athletes train smarter, all with a “Fit First” philosophy that prioritizes proper fit and expert guidance. More than just a retail store, it fosters a community of active locals with weekly group runs and rides, and personalized coaching and training support.



Baby Bloomers is a long-standing baby boutique and nursery store that’s been serving local families since 2003. Known for its curated selection of nursery furniture, bedding, baby gear, clothing, toys, and gifts, the shop helps parents design beautiful and functional spaces for little ones and find high-quality essentials for every stage of childhood.

EDENS Overview



60
YEARS OF EXPERIENCE

\$6.9B
IN REAL ESTATE ASSETS

96
COMMUNITY-FOCUSED PLACES

\$9.4B
IN AVERAGE BUYING POWER*

15M
DAILY REACH AT OUR PLACES

13
MAJOR MARKETS

209
TEAM MEMBERS

3
INSTITUTIONAL INVESTORS

Blackstone
JPMORGAN CHASE & CO.



*Average buying power within 3-mile radius of EDENS centers
**All figures as of 12.31.25



EDENS Purpose
Enrich Community

EDENS purpose is to enrich community through human engagement. We are the owner, developer and steward of a nationally leading portfolio of 96 open-air retail and mixed-use places in high-growth markets coast to coast.

We design our places to achieve 3.5 trips per week and 5 hours of dwell time, reaching over 15 million people daily. We know that when people come together, they feel a part of something bigger than themselves and prosperity follows – economically, socially, culturally and soulfully.



CONVENIENCE



ENGAGEMENT



EMOTIONAL
CONNECTION

moultrie
PLAZA

604 Coleman Blvd // Mt. Pleasant, SC

LEASING

Morgan Parker // 843.984.3321 // MParker@edens.com

