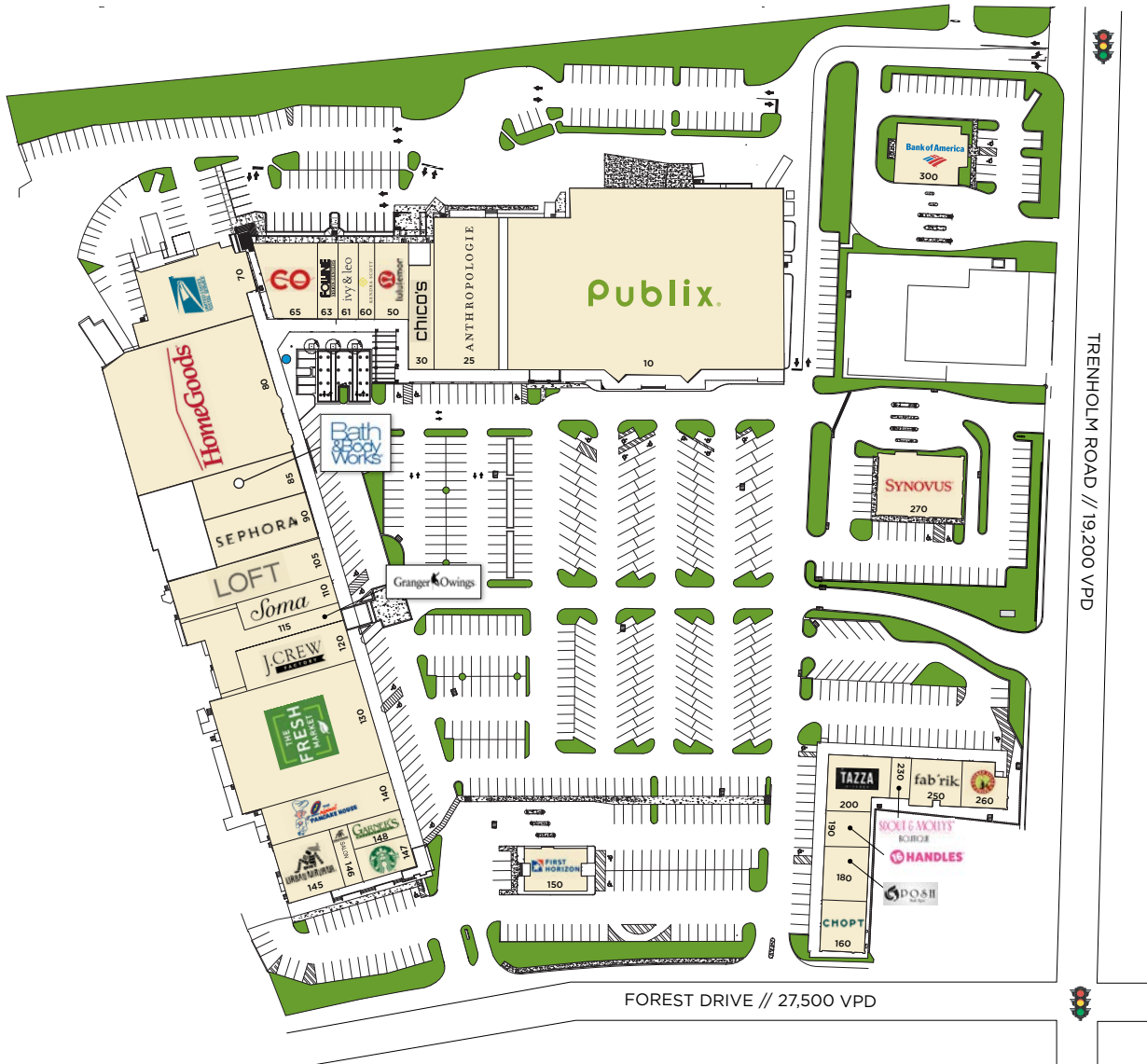




# Trenholm Plaza

4840 Forest Drive, Columbia, SC

TRENHOLM  
PLAZA  
SITE PLAN



NO	RETAILER	SF
10	Publix	37,912
15	Publix Expansion	3,000
20	Publix Expansion	6,001
25	Anthropologie	9,684
30	Chico's	2,679
50	lululemon athletica	2,700
60	Kendra Scott	1,342
61	Simply Mac	1,489
63	Folline Vision Center	1,426
65	CO	3,845
70	USPS	8,155
80	HomeGoods	23,676
85	Bath & Body Works	4,090
90	Sephora	4,539
105	LOFT	5,828
110	Soma Intimates	2,413
115	Granger Owings	5,581
120	J. Crew Factory	4,200
130	Fresh Market	17,400
140	Original Pancake House	4,725
145	Urban Nirvana	3,361
146	Urban Nirvana Hair	1,421
147	Starbucks	1,700
148	Garner's	1,435
150	First Horizon Bank	2,700
160	CHOPT	2,300
180	Posh Nail Spa	2,287
190	16 Handles	1,571
200	Tazza Kitchen	3,000
230	Scout & Molly's	977
250	fab'rik	1,893
260	Chicken Salad Chick	2,470
270	Synovus Bank	5,000
300	Bank of America	2,000

TRENHOLM  
PLAZA  
CENTER  
PHOTOS

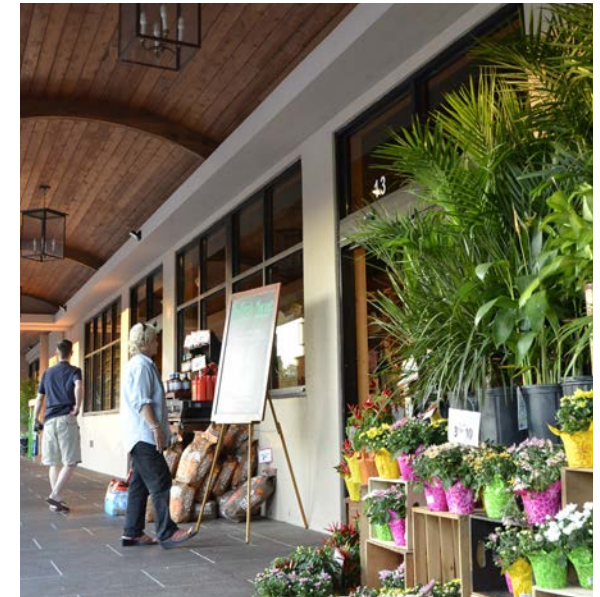


CENTER  
HIGHLIGHTS

Publix, The Fresh Market, Homegoods, Sephora, Bath & Body Works, lululemon, J. Crew Factory

Lighted full-access to Forest Drive (25,400 VPD) and Trenholm Road (18,500 VPD)

Excellent mix of best in class local and national retailers including the first and only Anthropologie, and Lululemon stores in the Columbia market



TRENHOLM PLAZA  
TRADE AREA

