



Atherton Mill

2000-2140 South Blvd, Charlotte, NC

ATHERTON MILL SITE PLAN



NO.	RETAILERS	SF	NO.	RETAILERS	SF	NO.	RETAILERS	SF
5	Barry's Bootcamp	5,902	50	OVME	2,063	175	Bonded	1,291
15	West Elm	15,385	53	Las Olas	1,487	180	Available	1,500
20	Cava	2,400	55	Indaco	2,761	190	Bookout Blooms	713
23	Ultra Nail Boutique	2,063	60	Trolley Barn Fermentory	7,833	195	Available	1,740
25	Eagle Food & Beer Hall	5,000	70	Available	2,836	200	Available	2,500
28	Bonobos	1,400	80	Anthropologie	8,659			
30	Golden Carrot	962	85	Warby Parker	1,614			
32	Dry Bar	1,600	87	Free People	5,608			
34	Uniquities	2,500	120	Vin Master	1,661			
36	Boem	1,774	130	Not Just Coffee	1,500			
38	Arrow	1,565	140	Society Awards	1,384			
40	Tecovas	3,843	150	Tremont	2,732			
43	Madewell	2,805	155	Savory Spice	1,755			
45	Sephora	4,164	160	O-Ku	3,898			
47	Lululemon	2,739	170	Sola Salon	6,938			



ATHERTON
MILL
CENTER
PHOTOS



CENTER
HIGHLIGHTS

116,000 SF (60,500 SF of new retail opening **Spring 2019)** of Restaurant, Retail and Office located in the heart of Charlotte's historic and eclectic South End District—home to more than 300 design-related businesses

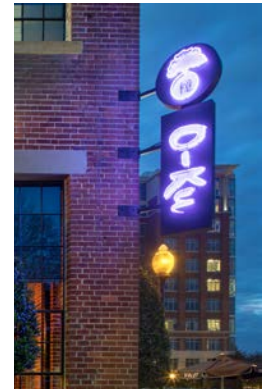
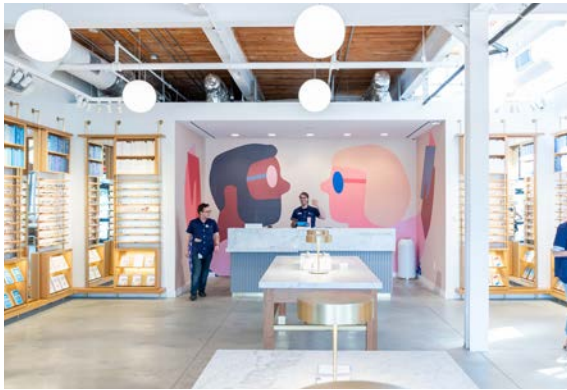
\$60M in annual retail sales.

346 Residential Units planned.

Lighted full-access to South Boulevard (**26,000 VPD**)

Situated along the LYNX Light Rail Blue Line (**16,900** average daily trips)

Home of the Atherton Farmers' Market (Creative Loafing's pick for "Best Farmers Market" in Charlotte)



ATHERTON
MILL
TRADE AREA

